

Welcome to Crossdale Primary School

- New Reception Parent Meeting 2026-27



Visitors and Adults on School Site: Your Role in Safeguarding Children

- These safeguarding expectations apply at all times - whether during the school day or at informal events such as school trips, concerts, fairs, PTA activities, or when you're on site as a parent helper or visitor.
- If you're involved in any school activity, you share responsibility for keeping children safe. Please follow the guidance below at all times.
- **Supervision & Conduct**
 - Never be alone with a child who isn't your own - stay in visible, shared areas.
 - Do not touch any child except your own.
 - Only supervise others if you're a named, staff-briefed volunteer.
 - Stay with your host/group unless DBS-cleared by staff.
 - Keep all information confidential - do not discuss children, families, or staff.
 - Report any accidents, incidents, or concerns to a staff member or trip leader immediately.
- **Toilets**
 - Use visitor toilets only (near the school office).
 - Children must not use visitor toilets.
 - Do not enter children's toilets or take your child into them.
 - Ask staff if unsure.
- **Phones & Photos**
 - Keep phones off while on school premises or trips.
 - No photos or videos unless the Headteacher has approved it.
- **Concerned About a Child?**
 - Report immediately to a Designated Safeguarding Lead (DSL): **Mr Cresswell / Miss Seedhouse**
 - For urgent concerns: **MASH (Multi-Agency Safeguarding Hub): 0300 500 80 80**

Kingfisher class!

- Your child's class is Kingfisher. They will keep this name throughout their time at Crossdale.



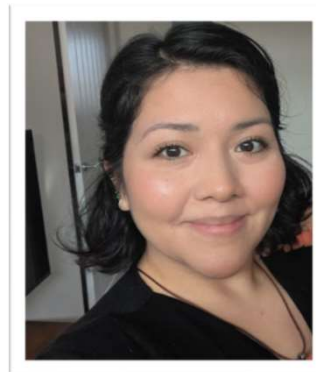
Welcome - Meet the Team



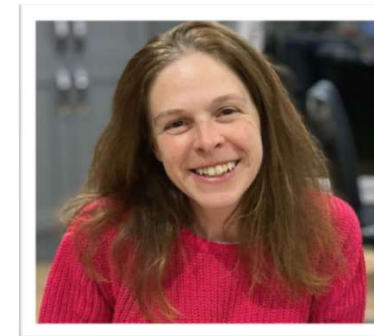
Mr Cresswell
Executive Head



Miss Seedhouse
Deputy Head



**Mrs Rodriguez-Pacey (known
as Mrs Rodriguez)**
Reception teacher (Mon-
Wed)



Miss Marshall
Reception teacher (Thurs-Fri)

Admissions

Office Staff



- Ensure we have all completed forms before admission

• Please bring proof address and a birth certificate to the school office.



**Your
Contact
Details**

- Please ensure contact details are up to date and inform school of any changes straight away

Starting Reception

[Kingfisher Class - Crossdale Primary School](#)



SEPTEMBER
2025

Welcome Information



**INTRODUCING
THE SPARROW CLASS**

"We are delighted to welcome your child to Crossdale Primary School and look forward to working with you to ensure they have the best possible experience."



. Available to read on the Kingfisher Class Crossdale School blog page.

. This document contains lots of important and useful information.

Diary Dates

- **Class visits:**
 - **Wednesday 24th June 1.15 - 3pm**
 - **Thursday 25th June 9.30 - 11.45am**
- **A named water bottle during class visits would be useful.**

- **Picnic & play – Friday 10th July 2.30 - 3.20pm** Parents are invited to come along with their child to school for an informal get together! More details to follow.
 - **Our wonderful PTA will provide food for the picnic.**

- **First day of school - Wednesday 2nd September, 8.50am**





Lunchtimes

. You can choose for your child to have a school dinner **or** bring in a packed lunch from home. **School meals are free until Year 2.**

. The menus are on a 3-week rota. You can pick the meals you'd like them to have.

. Each day your child will self-register and let us know what they are having. You don't need to let us know in advance.

. Dinners are eaten in the hall. We'll be there to help!

Visit [School Dinner Menu - Crossdale Primary School](#) for more information



Fruity Snack and Milk

- A piece of fruit is also provided to all children in Reception and KS1. This may be an apple, banana, pear, tomato or something similar.
- Should your child wish to bring their own snack, as part of our 'Healthy Schools' status, we only allow fruit based or a healthy snacks (we also ask parents to avoid nuts and nut-based snacks to support the families of children with allergies).
- Milk. All children are offered milk until they turn 5 years old. After that, you can order and pay for milk [Free School Meals and Milk - Crossdale Primary School](#)



Getting to know your child



. Please ask your child's Nursery/Pre-school to send us a **transition report.**



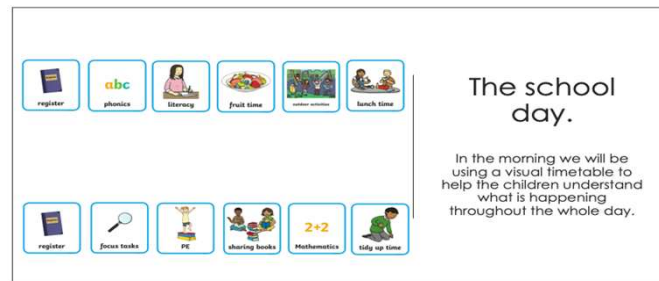
. You'll receive an **'All About Me'** book when your child comes for their class visit. Please help your child to fill this in and bring it with them on their first day of school.

. During the year you may like to share home experiences e.g., celebrations, visits, achievements.

. Any school related questions should be sent to the office at:

contact@crossdale.notts.sch.uk

- **Registration:** Self-registration and messages
- **Adult-led activities:** one-to-one and small group work
- **Whole class:** phonics, literacy, maths, story, PE, Forest School, and topic sessions
- **Continuous Provision:** Choose from a variety of activities set up in the classroom and outside to deepen knowledge, skills and understanding
- **Breaktimes:** 10.30–10.45 and 2.10–2.20
- **Lunchtime:** 12.00–1.00



Daily Routines

EYFS framework



The Seven Areas of Learning and Development

The Foundation Stage Curriculum is for children aged birth to 5 years and has 7 areas of learning which are:

Prime Areas

Communication & Language

Physical Development

Personal, Social, Emotional Development

Specific Areas

Literacy

Mathematics

Expressive Arts & Design

Understanding the World



Early Years Foundation Stage (EYFS) framework



The Characteristics of Effective Learning

The focus of the Characteristics of Effective Learning is on how children learn rather than what they learn. We support children to develop these characteristics to make sure they become effective learners.

Playing and Exploring

- Finding out and exploring
- Playing with what they know
- Being willing to have a go



Active Learning

- Being involved and concentrating
- Keeping trying
- Enjoying and achieving what they set out to do



Creating and Critical Thinking

- Having their own ideas
- Making links
- Choosing ways to do things



Preparing your child for Reception



We encourage the children to be independent with their self-help skills.

Please help teach your child to:

- use the toilet independently, where possible
- practise washing their hands and dressing themselves
- carry their own bag and manage their personal belongings
- sit and listen to short stories or simple instructions
- take turns and play co-operatively with other children
- talk about their feelings and ask for help when they need it
- become familiar with everyday routines, such as snack or tidy-up time



Preparing your child for Reception

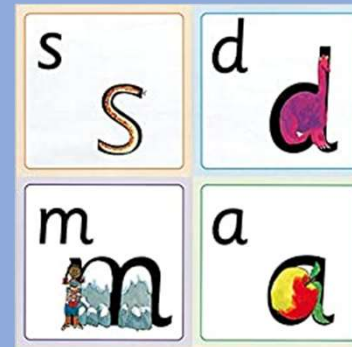


Phonics

Whilst this is not an essential part of your child's preparation for school, you may wish to familiarise yourself with the system we use.

At Crossdale we use the **Read, Write Inc** programme:

- Detailed approach to teaching phonic skills to children
- **Rhymes** to help children to remember the sound
- **Blending** sounds to read words



Do

- Use pure sounds
- Play I spy and word games
- Share lots of books
- Practise drawing skills
- Sing nurse rhymes and songs



Don't

- Use letter names
- Worry about capitals



More information will be given at our start of year meeting in September.

School Uniform



-
- Burgundy sweatshirt/ cardigan (available to order from school)
 - White/ burgundy polo shirt
 - Grey trousers/shorts/skirt/pinafore
 - Summer dresses may be worn in burgundy or red colours only
 - Black, unbranded shoes (no laces unless your child can tie them, please).
 - Please ensure that every item of clothing is clearly labelled with your child's name.
 - Your child must have a waterproof coat in school every day.

 - There is preloved school uniform available from the PTA.



Other items

• Crossdale book bag (please do not carry water bottles in these as they leak and ruin books). Crossdale PTA have very kindly agreed to fund these.

- A small tray toy that can live in your child's tray at school
- PE kit (worn to school on set PE days. These will be confirmed before the start of term.)
- Water bottle (water, not juice please)
- Wellies and waterproofs (for Forest Schools)
- Spare clothing in case of toilet accidents (if needed)
- Sun hats/ winter hats/ gloves when appropriate



Illnesses and Absences

- It's very important your child attends regularly
- 95%-97% attendance = good
- 97% or above = exceptional
- Learning and friendships are affected with regular absences
- Telephone the school if your child is ill
- Request leave of absence in writing to the Headteacher



Parents as Partners

How do we communicate at CROSSDALE



Text messages are sent for...

Blog posts are sent for...

UPCOMING EVENTS

Letters are sent for anything needing a permission slip as well as certain school documentation or information such as end of year reports, kits lists, MM invites or attendance information.

- We will keep in touch in the following ways:
- Short messages at hand over or collection
- Parent evenings
- Pre-arranged teacher / parent catch ups as required
- Class blog – can be found on the school website, please check for posts [Kingfisher Class - Crossdale Primary School](#)
- 'Crossdale News' newsletter
- e-mail messages
- Fundraising events and activities, PTA

Frequently asked questions and comments



. I'm worried that my child will cry when I try to leave them.

It's tempting to stick around, however most children who cry at drop-off turn off the tears right after the good-bye. To make sure that's the case, we can send you a message to let you know that all is ok. We can discuss and come up with a plan together should there be more to it.

. What about lunch times, how will they know where to go?

The teaching staff stay with the children for their first lunch time sessions to provide support, guidance and reassurance. The midday supervisors are also always on hand to guide them through. We also ask Y6 to act as 'Buddies' to help settle the children at the start of the year

. What does my child need to do before they start school?

Page 14 has lots of tips and ideas on how to prepare your child for school. Enabling your child to be independent will give them the best possible start.

. I'm worried that my child sometimes finds it hard to make friends.

We'll provide opportunities over time to get to know everyone in the class, not just their special friends, by providing activities that involve turn-taking and sharing in small groups. We'll be observing the children and will guide a child we feel is struggling with making relationships. We're always on hand to discuss any concerns.

Frequently asked questions and comments



. How can I get my child to write?

Your child does not need to be able to write before starting school. You can help your child's writing skills by providing materials for mark-making (pens, paper, paint, sand...) and encourage the marks that they make. Drawing is a wonderful pre-cursor to writing and is something you could do together. Providing fine –motor activities (playdough, clay, threading, tweezers..) are great for finger strengthening to get ready for writing.

. What happens if my child goes to morning or afterschool club?

Your child will be brought to or collected from the Reception classroom by a member of the Lime Trees staff. Don't forget, Crossdale and Lime Trees are separate, although we do work together closely.

. Can other people collect my child at the end of the day?

If it is not one of the usual people (on your contact list) collecting your child, please let a member of staff know or contact the school office.

Please contact us if you have any concerns or questions:

contact@crossdale.notts.sch.uk

Any questions?



