

Welcome Information



"We are delighted to welcome your child to Crossdale Primary School and look forward to working with you to ensure they have the best possible experience."



The Kingfishers



A MESSAGE FROM THE HEADTEACHER

Dear Parents,

We are delighted to welcome your child to Crossdale Primary School and look forward to working with you to ensure they have the best possible experience.

At Crossdale, we value the sense of belonging within our 'Crossdale Family,' where every member of our school community is respected, supported, and encouraged. We want parents and carers to feel involved in school life and for children to feel happy, secure, and safe. Our success as a high-achieving school is built on teamwork—children, parents, staff, and governors working together to create a positive and nurturing environment.

We take pride in fostering a friendly, lively, and caring atmosphere where children grow emotionally, socially, and intellectually. Our goal is to inspire a lifelong passion for learning that will stay with them beyond their years at Crossdale.

Whether this is your first child joining us or you have had others pass through our school, we understand the importance of having the right information to prepare for school life. This booklet (along with our website) should answer many of your questions, but please don't hesitate to contact us if there is anything you would like to discuss.

If there are any adjustments we can make to support you when you join or visit us, please let us know. We look forward to sharing this journey with you—welcome to the Crossdale family!

Kind regards,

Mr. Cresswell

Child Protection Concerns

At Crossdale, your child's safety and well-being are our highest priority. As part of our commitment to safeguarding, please be aware of the following procedures.

Every school is required to refer any concerns about a child's welfare to the Children's Social Care Services Department. While we will usually discuss concerns with families and seek agreement before making a referral, this will only happen when it does not place a child at increased risk of harm. These procedures exist to protect children from abuse.

If we make a referral, it does not mean we are accusing parents or carers of wrongdoing. Instead, it allows for further enquiries to be made and ensures that any necessary help and support are provided.

OUR STAFF

Executive Head Teacher : Peter Cresswell

Head of school: Miss Seedhouse

School Business Manager : Susan Cuttell office@crossdale.notts.sch.uk

Admin Assistant : Shelley Szymkiw admin@crossdale.notts.sch.uk

Tel: 0115 9748088

Email: contact@crossdale.notts.sch.uk

Visit our website: www.crossdaleschool.com

[Please click here to see all of the staff at Crossdale Primary School](#)



Mr Cresswell



Miss Seedhouse



Mrs Szymkiw & Miss Cuttell

If you need to reach the teachers, just email contact@crossdale.notts.sch.uk or pass a quick message during drop-off or pick-up.

PUPIL INFORMATION



Once you have accepted the place at Crossdale on the NCC portal – (this must be done within 2 weeks of your offer) you will be sent an information form from us which should be completed as soon as possible.

This contains important information, which is strictly confidential, concerning emergency contact numbers, medical information, etc. We will also send you a link to sign up to Arbor, our school database & payment system, please also complete as many details on Arbor yourself as possible.

We use the Arbor app as the main way in which we communicate with parents. You can purchase school uniform, send us messages, and update your child's profile.

Each class has a blog page updated every half term with learning objectives and photos of activities. The website also includes important information and dates, refreshed bi-weekly with the Crossdale News, our newsletter, on current and upcoming events.

- Blogs – [click here](#)
- Latest News and Events – [click here](#)



TALK TO US: We operate an open door policy and very much value this as a way of staying in touch with parents on a daily basis. A member of SLT are at the gates before and after school should you ever wish to talk to them.

EMAILS & IN APP MESSAGES: These are used for:

- Links to blog posts, payment information, absence/late information.
- Reminders of events.
- Sports clubs, requests for volunteers, school trip details etc.
- 'Well done' messages to celebrate a pupil's achievements, notification of a head bump



PHONECALLS: Generally used for more urgent issues or for following up on other business, to give a message relating to a child, eg forgotten PE kit.

THE SCHOOL DAY

Morning session: 9am – 12pm (gate & doors open at 8:50am)

Morning break: 10.30am – 10.45am

Lunch: 12pm – 1pm

Afternoon break: 2.10pm – 2.20pm

Afternoon session: 1pm – 3.30pm



Children head straight into their classroom between 8.50am and 9am – the teacher will greet them at the classroom door. We discourage children from playing on the school grounds before school.

To avoid congestion, we would appreciate it if parents say goodbye to their child and leave the playground promptly.

PUNCTUALITY & ABSENCE

Please ensure your child arrives at school by 9am, at which the gate will be locked. Arriving late can be unsettling for the children, and parents must go to the office to register if the gate is closed. We monitor lateness and will send a letter for recurring issues.

Remember to pick up your children on time. For last-minute changes or if someone else will pick up your child, phone the school office promptly. Children cannot leave with another adult without prior notification from their legal guardian.

If your child is absent from school, please contact the school office on 0115 9748088 each day that your child will not be attending. Our telephone system gives you the option to leave a message to report your child's absence; please leave your child's name, class, and reason for absence – you will need to do this on each day that your child is off.

If your child is absent from school without notice, the school will telephone the parent on each day of absence if the school have not been notified.

Children returning to school after illness should clearly be fit to do so and free from infection.

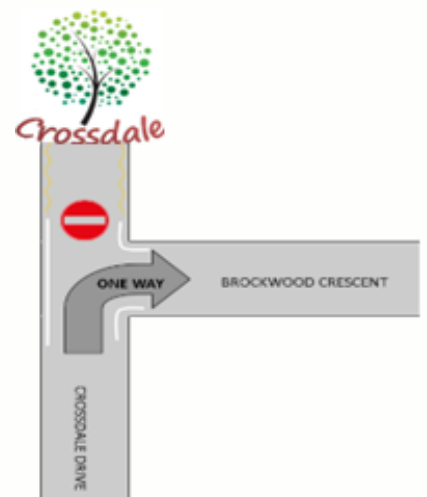
If your child suffers from a bout of sickness or diarrhea, then you should keep your child off school for a minimum of 48 hours after the last episode.

PARKING

There are yellow zig-zag lines on both sides of the road between the school and Brockwood Crescent indicating no parking, between 8.30am and 4.30pm. Please park sensibly, avoiding driveways, not parking opposite other cars, and keeping clear of corners. Please drive slowly and carefully near the school. The safety of our pupils is paramount and at busy times we ask you to take extra care & vigilance.

We have an informal one-way system encouraging parents to drive up Crossdale Drive towards the school and exit onto Brockwood Crescent, which reduces congestion and improves safety for children.

We also ask parents to park away from the school and walk the remaining distance when possible.



SCHOOL UNIFORM

School Uniform Overview

Our school uniform consists of:

- Burgundy sweatshirt or cardigan
- Grey trousers, shorts, or skirt
- Shirt or polo shirt (white/burgundy)
- Summer dress (burgundy or red)
- Black shoes (no trainers or obvious branding)

Important: Open-toed and sling-back sandals are not allowed for safety reasons.

Embroidered school logo items can be ordered through Arbor. Please label all clothing to aid in recovery if lost.

We offer preloved clothing free of charge if it's available; please request items via admin@crossdale.notts.sch.uk

PE Kit

PE Kit: 2026 / 2027

Children should come to school wearing the correct PE kit on their PE days.

Our PE kit is:

- a white or burgundy round-neck PE t-shirt, either plain or with the Crossdale logo
- burgundy or black shorts
- plimsolls or trainers, ideally plain or with minimal branding

In colder weather:

- black tracksuit bottoms or leggings. They may also wear their usual Crossdale sweatshirt or fleece.

PE clothing should be unbranded, apart from the Crossdale logo.

PE Kit: September 2027 onwards

Children should come to school wearing the correct PE kit on their PE days.

Our PE kit is:

- a burgundy round-neck PE t-shirt, either plain or with the Crossdale logo
- black shorts
- plimsolls or trainers, ideally plain or with minimal branding

In colder weather, children may wear black tracksuit bottoms or leggings. They may also wear their usual Crossdale sweatshirt or fleece.

PE clothing should be unbranded, apart from the Crossdale logo.

No jewelry is allowed in PE. If ear studs can't be removed, cover them with micropore tape.

SCHOOL MEALS



On a daily basis, children can choose from a Hot Dinner, Vegetarian dinner, Jacket Potato, School Sandwich or bring a packed lunch from home. School meals are freshly prepared on-site with a healthy, balanced menu, which can be viewed [here](#).

In the morning, children self-register their choice & can mix hot dinners and sandwiches throughout the week without prior notice. Please label lunchboxes to avoid mix-ups. Our midday supervisors are always there to lend a helping hand. Meals cost £3.15 each, totaling £15.75 weekly. However, children in Reception, Year 1, and Year 2 get **Universal Free School Meals**.

If your child requires a medical diet due to a food allergy, food intolerance or a medical condition that requires an adapted menu please follow this link to request a medical diet:

<https://orders.lunchhound.co.uk/medicaldiets/request>

SCHOOL MILK

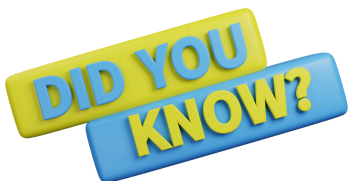
School milk is FREE for children under the age of five, FREE to children receiving or entitled to free school meals & subsidised for all other children in primary education.

After your child turns five, milk can be offered at a cost of approximately £20 per term. The school office will handle the registration for the new reception class on your behalf. For other children, registration and payments must be completed by Tuesday evening to ensure children receive milk the following week.

In addition, all children in Foundation and KS1 will be provided with a piece of fruit at morning break which may include an apple, banana, pear, tomato, or something similar.

If your child wishes to bring their own snack, in line with our 'Healthy Schools' status, only fruit-based or healthy snacks are permitted. We kindly request that parents avoid nuts and nut-based snacks to accommodate families with allergies. Additionally, if children choose to bring their own fruit, we encourage using reusable containers, such as Tupperware, to promote sustainability and minimize litter on site.

PUPIL PREMIUM AND FREE SCHOOL MEALS



Children in Reception, Year 1, and Year 2 are entitled to Universal Free School Meals, however from Year 3 the cost per day would be £3.15 per meal. From September 2026, the government has announced plans to expand Free School Meal (FSM) eligibility so that all households receiving Universal Credit will qualify, removing the current £7,400 earnings cap. Therefore we urge you to check via the [eligibility checking system](#).

Also, we aim to ensure as many eligible pupils as possible benefit from the Pupil Premium Grant (PPG).

Crossdale's PPG funding significantly impacts our offerings. If eligible, we encourage you to apply. Follow the link to apply: <https://notts.cloud.servelec-synergy.com/SynergyWeb/FSM.aspx>

What is the Pupil Premium Grant? (For new parents)

The Pupil Premium is extra funding that schools in England receive from the government to help children who may need additional support to do their best at school.

If your child is eligible, the school gets extra money to support their learning. This can be used in a variety of ways, depending on what children need.

For example, it may help with:

Extra teaching support or small group work

Help with reading, writing, and maths, access to school trips, clubs, or activities, support for social and emotional wellbeing. Providing resources such as books or uniforms in some cases

Who is eligible?

Your child may qualify if you receive certain benefits, such as:

Universal Credit, Income Support, Income-based Jobseeker's Allowance or Employment and Support Allowance, Support under Part VI of the Immigration and Asylum Act

Children who have been eligible for free school meals at any point in the last 6 years are also included. There is also separate Pupil Premium funding for children in care or who have previously been in care.

Why it matters for your child

Registering for Pupil Premium does not label or single out your child. Instead, it allows the school to access funding that can directly benefit them and improve their overall school experience. Even if your child receives universal free school meals in early years or KS1, it is still important to apply if you are eligible—this ensures the school receives the funding.

What do you need to do?

If you think your child might qualify, you should:

Check with your local council or school

Complete a simple application form (usually online or through the school)

Schools treat this information confidentially.

In summary:

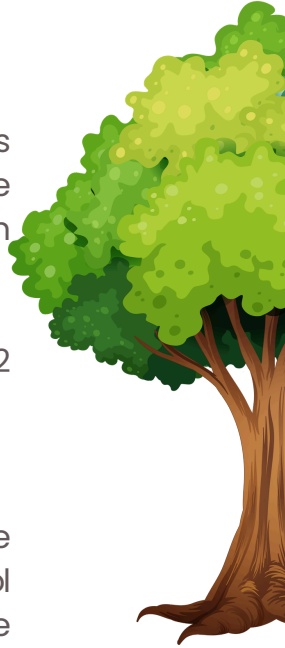
The Pupil Premium is designed to make sure every child has the support they need to succeed, regardless of their background. Applying, if you are eligible, helps both your child and the school.

BREAKFAST AND AFTERSCHOOL CLUB

Breakfast Club operates every morning starting at 7:30am, while the Afterschool Club is available from the end of the school day until 6:00pm during term time. The clubs are run by The Lime Trees, and operate primarily from 'The Hive' with the younger children using the bungalow during peak times.

To secure a spot for your child, please contact The Limetrees Head Office at 01159 313 562 or email hello@thelimetrees.co.uk.

Reservations must be made in advance and payments can be made directly to The Lime Trees via bank transfer, childcare vouchers, or the Government Tax-Free Scheme. If your child is unable to attend a booked session at Breakfast or Afterschool Club, it's essential to notify The Lime Trees directly, as well as inform the school for the Afterschool Club.



VOLUNTEERING

*Together,
we make a
Difference*

Support from Our Parents

We appreciate any help in the classroom. This could be to listen to the children read or practise their maths skills, or for one-off events such as DT days or sports day. We also need swimming observers in the autumn and spring terms, and support throughout the year to help with visits.

All volunteering parents must complete a Risk Assessment. We hold a brief meeting to fill out the assessment and review procedures. This must be completed before helping at school.

READING

When your child starts school, they'll bring home "swap books" to read with you. Our PTA welcomes new pupils with a Crossdale book bag to start their reading journey.

We use the Read, Write Inc Phonics program, which teaches phonics with rhymes to help children remember sounds. As they learn letter sounds, they'll start blending them to read words and then move on to ditty books. More details are available on the website www.ruthmiskin.com, and further information will be shared at our information evening.

We look forward to welcoming you to our Crossdale Family!

We are very much looking forward to working with you as your child embarks on their new school adventure!