

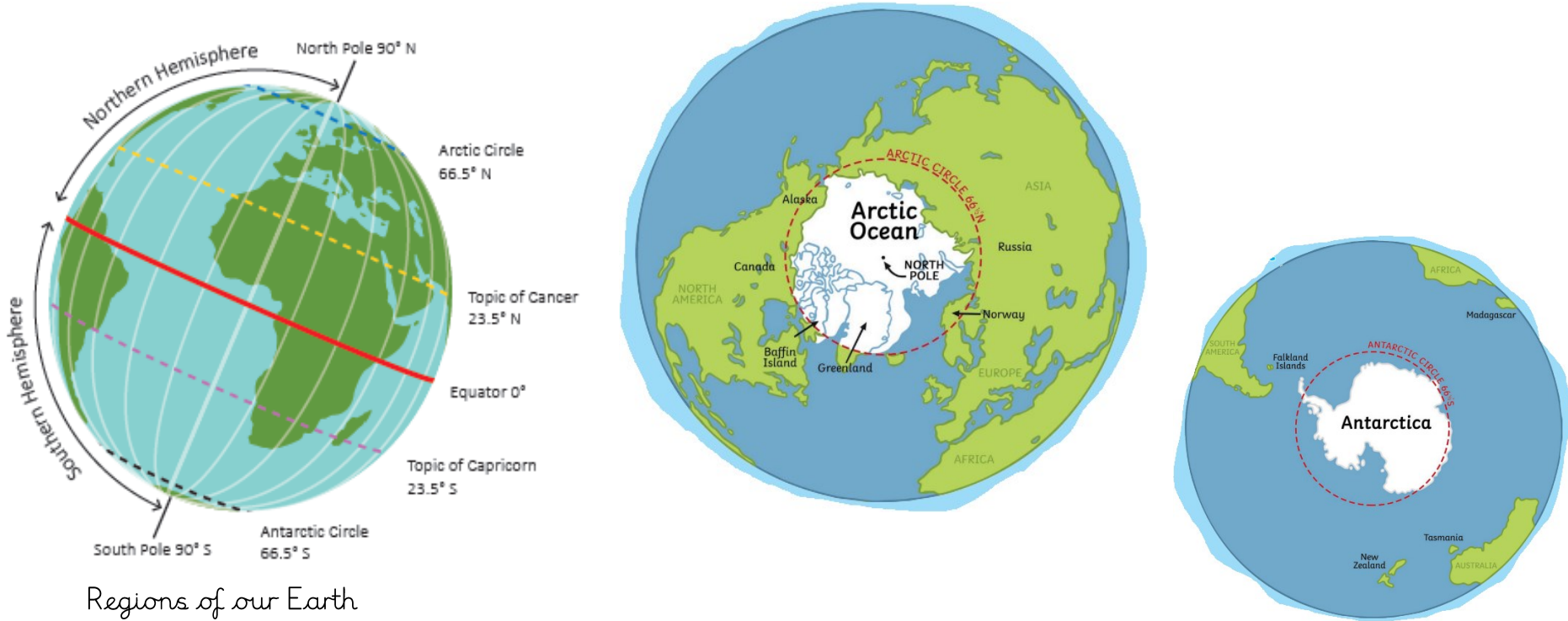
Great Explorers

Vocabulary	Definition
climate	The usual weather conditions that occur in a place over a long period of time.
North / South Pole	The northernmost and southernmost points on the Earth.
Tropics of Cancer and Capricorn	The lines of latitude either side of the equator which mark the area at the centre of the Earth where the sun shines directly ahead.
polar day	Near constant daylight in the Arctic or Antarctic when the Sun does not set below the horizon. This occurs during their summer.
polar night	Near constant darkness in the Arctic or Antarctic when the sun does not rise above the horizon. This occurs during their winter.
precipitation	Any water falling from the sky:
climate change	The change in temperature of the Earth due to human activities such as burning fossil fuels and deforestation.

How is climate change damaging the poles?

The Arctic landscape and wildlife are at risk due to climate change. Scientists are concerned that the rising global temperature is causing the polar ice to melt. This causes sea levels to rise, meaning that weather patterns across the world will change. Polar regions will be damaged because they will change.

Where are the polar regions found?



Regions of our Earth

Human life at the poles



The Nenet tribe live in the Arctic and their lifestyle is adapted to the cold polar climate.. They hunt reindeer for food and use their fur to keep warm. They move around throughout the year, in search of food. They live in special tents called chums.

What is the polar climate like and what physical features can be found there?

Arctic: Winter temperatures can reach -50°C and summer temperatures can reach 10°C .

The landscape is varied and includes mountains, tundra and boreal forest. There are also glaciers and icebergs.

It is home to small populations of people and a variety of plants and animals.

Antarctic: Winter temperatures can drop to -89°C and there is little precipitation. No people permanently live there, although scientists stay for part of the year to carry out research. There is lots of sea life native to the area. Physical features include glaciers, ice floes and icebergs.