

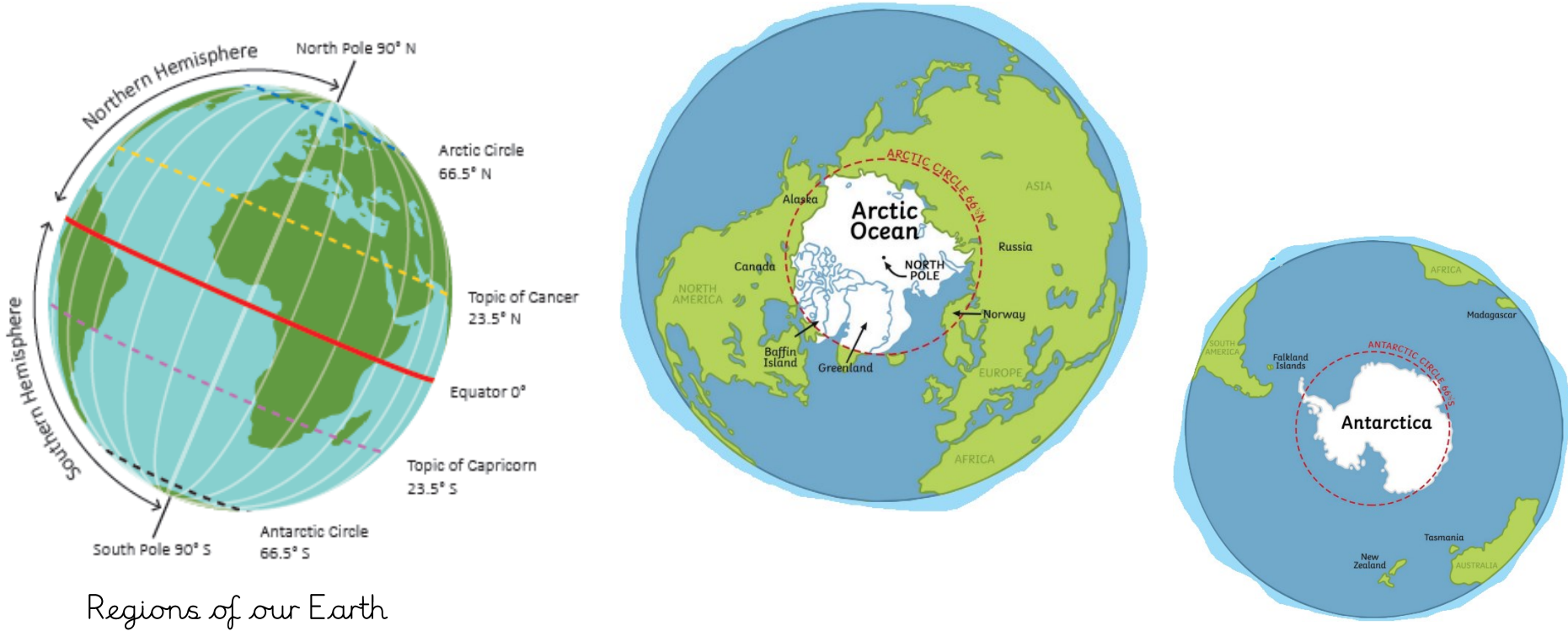
Great Explorers

| Vocabulary | Definition |
|----------------|--|
| climate | The usual weather conditions that occur in a place over a long period of time. |
| North Pole | The northernmost point on the Earth. |
| South Pole | The southernmost point on the Earth. |
| polar day | Near constant daylight in the Arctic or Antarctic when the Sun does not set below the horizon. This occurs during their summer. |
| polar night | Near constant darkness in the Arctic or Antarctic when the sun does not rise above the horizon. This occurs during their winter. |
| precipitation | Any water falling from the sky: snow, rain or hail. |
| climate change | The change in temperature of the Earth due to human activities such as burning fossil fuels and deforestation. |

How is climate change damaging the poles?

The Arctic landscape and wildlife are at risk due to climate change. Scientists are concerned that the rising global temperature is causing the polar ice to melt. This causes sea levels to rise, meaning that weather patterns across the world will change. Polar regions will be damaged because they will

Where are the polar regions found?



Regions of our Earth

Human life at the poles



The Nenets tribe live in the Arctic and their lifestyle is adapted to the cold polar climate. They hunt reindeer for food and use their fur to keep warm. They move around throughout the year, in search of food. They live in special tents called chums.

What is the polar climate like and what physical features can be found there?

Arctic: Winter temperatures can reach -50°C and summer temperatures can reach 10°C . The landscape is varied and includes mountains, tundra and boreal forest. There are also glaciers and icebergs. It is home to small populations of people and a variety of plants and animals.

Antarctic: Winter temperatures can drop to -89°C and there is little precipitation. No people permanently live there, although scientists stay for part of the year to carry out research. There is lots of sea life native to the area. Physical features include glaciers, ice floes and icebergs.