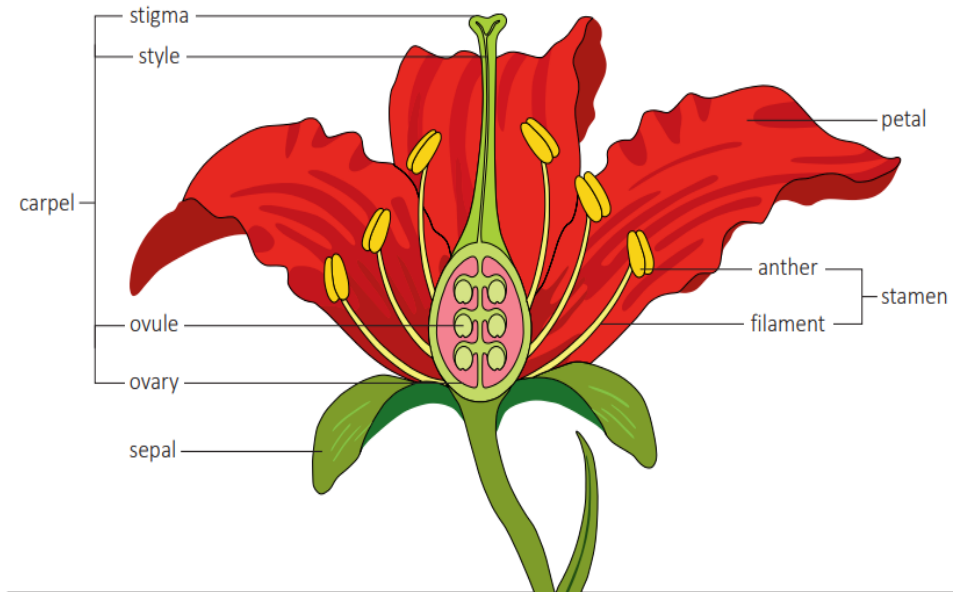


How do plants reproduce?

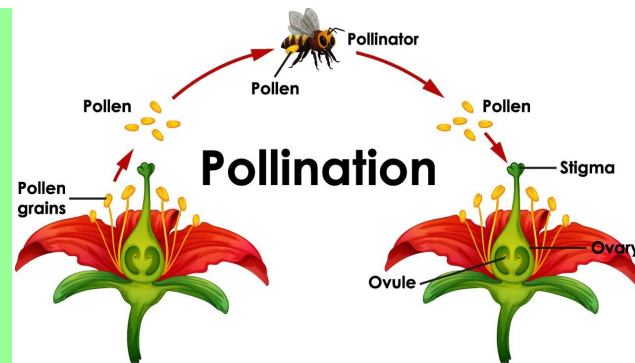
Vocabulary	Definition
stamen	made up of the anther and filament and is the male reproductive organ of the flower.
filament	Supports the anther
anther	Makes pollen grains
carpel	The female part of the flower. Made up of the stigma, style, ovules and ovary.
stigma	collects pollen grains during pollination
style	connects the stigma and ovary. Pollen grains travel down it into the ovary.
ovule	female eggs that will develop into a seed when fertilised by the male pollen.
ovary	Contains the ovules
sepal	Protects the flower as a bud

Anatomy of a flower



Sexual reproduction (pollination)

- Involves flowers
- When male and female sex cells (gametes) meet.
- Offspring are different to parents
- Pollen—Stigma—Style—Ovary—Ovules.



Asexual reproduction

- Doesn't involve flowers
- Only one parent is needed,
- Offspring are genetically identical to the parent.
- Blubs, tubers, runners, rhizomes,

