

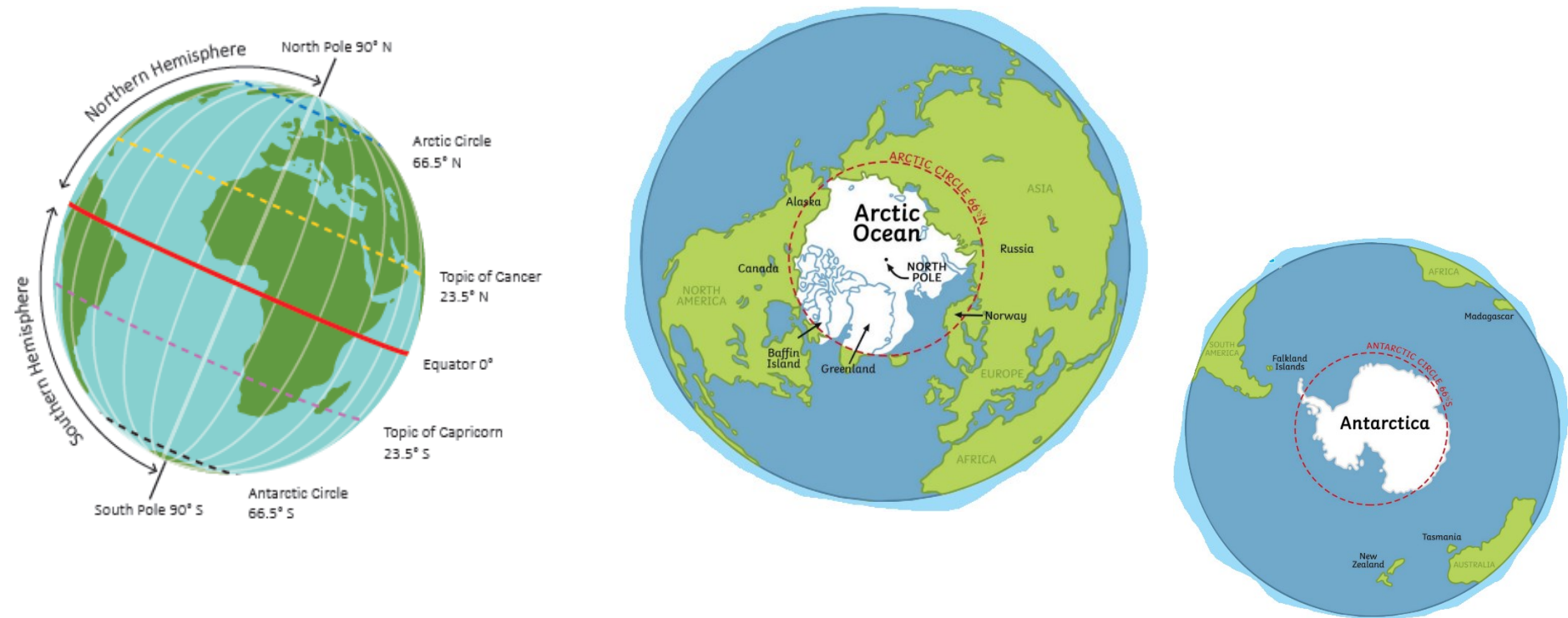
# Frozen Kingdoms

Vocabulary	Definition
Antarctic Circle	An imaginary circle of latitude that lies 66.5 south of the equator.
Arctic Circle	An imaginary circle of latitude that lies 66.5 north of the equator.
climate	The usual weather conditions that occur in a place over a long period of time.
North Pole	The northernmost geographical point on the Earth.
South Pole	The southernmost geographical point on the Earth.
polar day	Near constant daylight in the Arctic or Antarctic during the summer months when the Sun does not set below the horizon.
polar night	Near constant darkness in the Arctic or Antarctic during the winter months when the sun does not rise above the horizon.
polar regions	Collective name for the Arctic and Antarctic.
glacier	Slow-moving masses of flowing ice.
climate change	The change in temperature of the Earth due to human activities such as burning fossil fuels and deforestation.

## How is climate change damaging the poles?

The Arctic landscape and wildlife are at risk due to climate change. Scientists are concerned that the rising global temperature is causing the polar ice to melt. This causes sea levels and temperatures to rise, meaning that weather patterns will change and the polar regions will be damaged.

## Where are the polar regions found?



## Human life at the poles



The Nenets tribe live in the Arctic and their lifestyle is adapted to the cold polar climate. They hunt reindeer for food and use their fur to keep warm. They move around throughout the year, in search of food. They live in special tents called chums.

## What is the polar climate like and what physical features can be found there?

**Arctic:** Winter temperatures can reach  $-50^{\circ}\text{C}$  and summer temperatures can reach  $10^{\circ}\text{C}$ .

The landscape is varied and includes mountains, tundra and boreal forest. There are also glaciers and ice bergs.

It is home to small populations of people and a variety of plants and animals.

**Antarctic:** Winter temperatures can drop to  $-89^{\circ}\text{C}$  and there is little precipitation. No people permanently live there, although scientists stay for part of the year to carry out research. There is lots of sea life native to the area. Physical features include glaciers, ice floes and ice bergs.

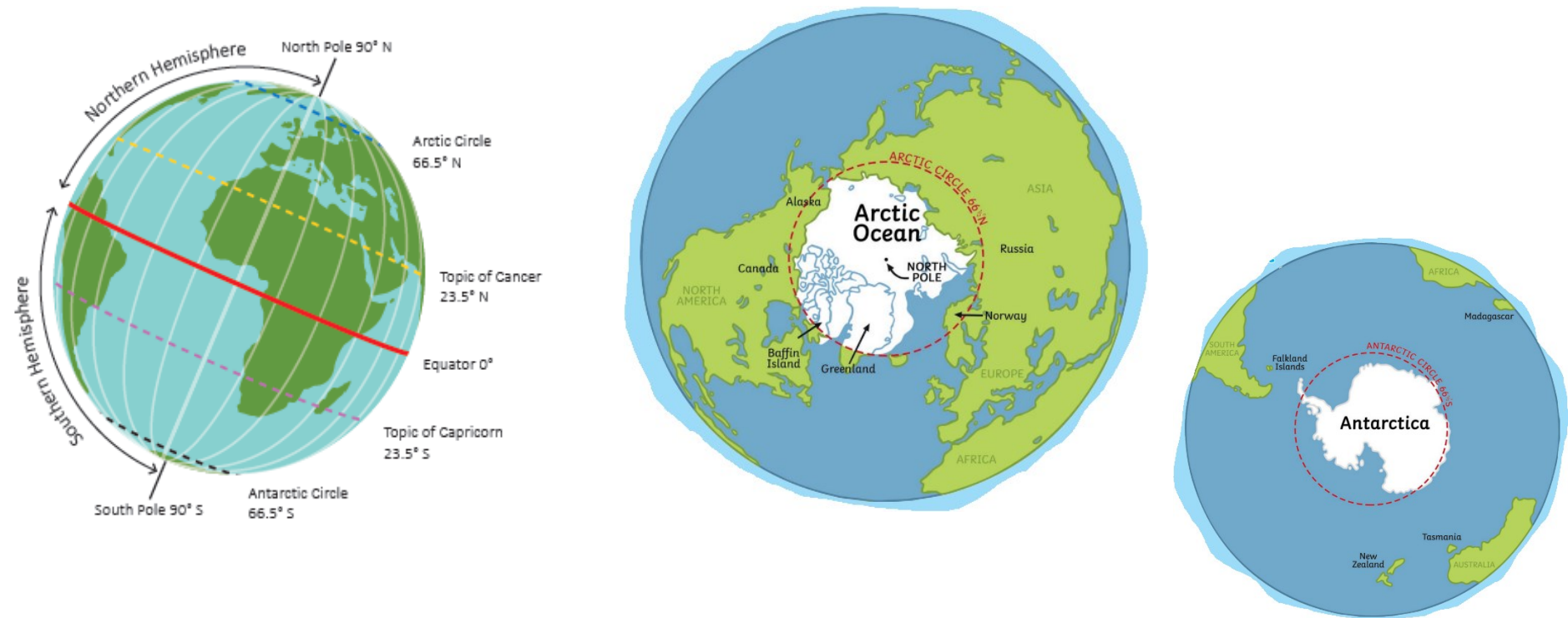
# Frozen Kingdoms

Vocabulary	Definition
Antarctic Circle	An imaginary circle of latitude that lies 66.5 south of the equator.
Arctic Circle	An imaginary circle of latitude that lies 66.5 north of the equator.
climate	The usual weather conditions that occur in a place over a long period of time.
North Pole	The northernmost geographical point on the Earth.
South Pole	The southernmost geographical point on the Earth.
polar day	Near constant daylight in the Arctic or Antarctic during the summer months when the Sun does not set below the horizon.
polar night	Near constant darkness in the Arctic or Antarctic during the winter months when the sun does not rise above the horizon.
polar regions	Collective name for the Arctic and Antarctic.
glacier	Slow-moving masses of flowing ice.
climate change	The change in temperature of the Earth due to human activities such as burning fossil

## How is climate change damaging the poles?

The Arctic landscape and wildlife are at risk due to climate change. Scientists are concerned that the rising global temperature is causing the polar ice to melt. This causes sea levels and temperatures to rise, meaning that weather patterns will change and the polar regions will be damaged.

## Where are the polar regions found?



## Human life at the poles



The Nenets tribe live in the Arctic and their lifestyle is adapted to the cold polar climate.. They hunt reindeer for food and use their fur to keep warm. They move around throughout the year, in search of food. They live in special tents called chums.

## What is the polar climate like and what physical features can be found there?

**Arctic:** Winter temperatures can reach  $-50^{\circ}\text{C}$  and summer temperatures can reach  $10^{\circ}\text{C}$ .

The landscape is varied and includes mountains, tundra and boreal forest. There are also glaciers and ice bergs.

It is home to small populations of people and a variety of plants and animals.

**Antarctic:** Winter temperatures can drop to  $-89^{\circ}\text{C}$  and there is little precipitation. No people permanently live there, although scientists stay for part of the year to carry out research. There is lots of sea life native to the area. Physical features include glaciers, ice floes and ice bergs.